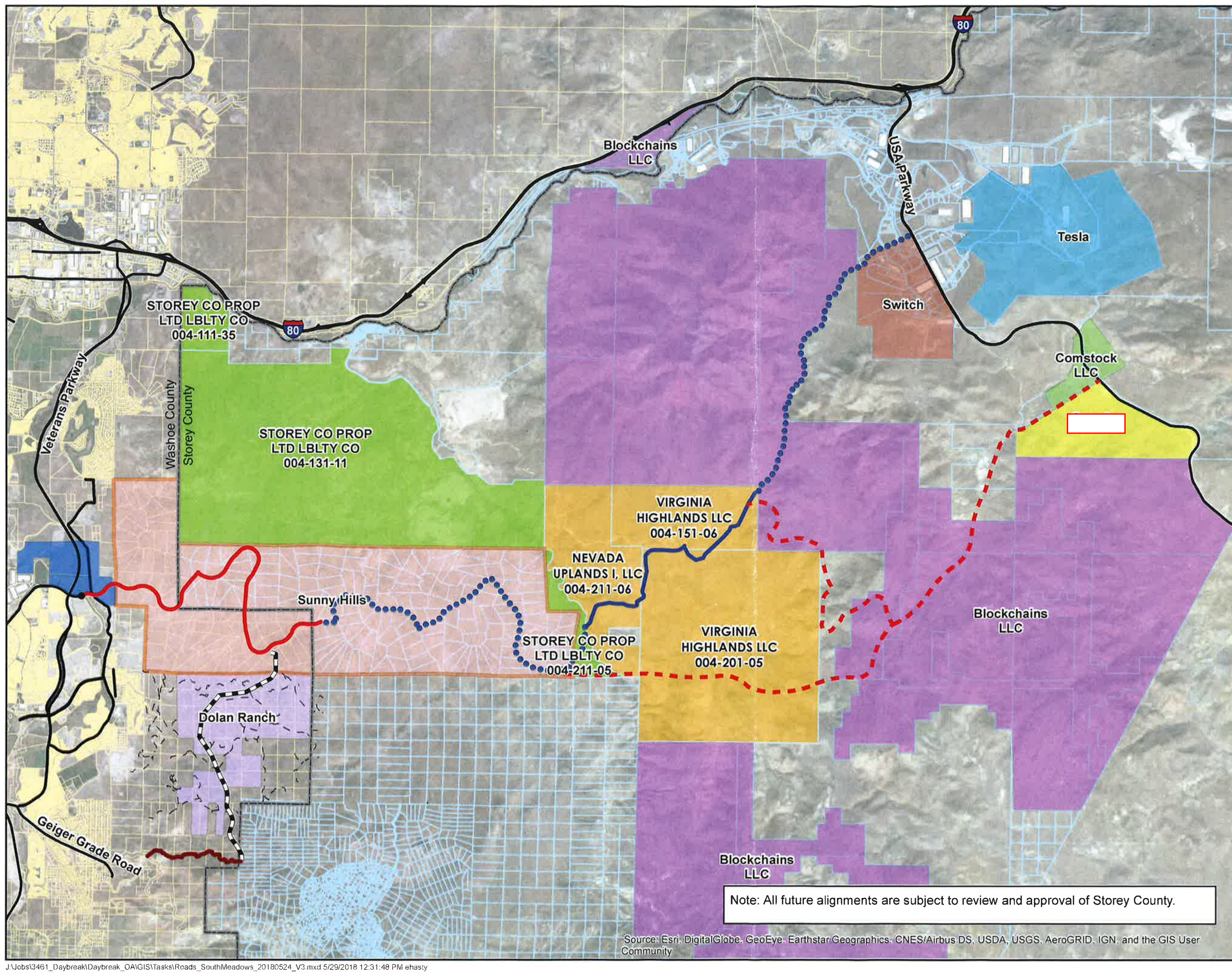
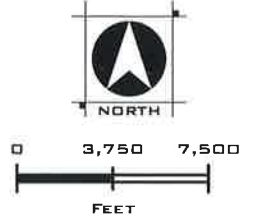


FUTURE ACCESS ROAD OPTIONS
 WASHOE / STOREY COUNTY
 SUNNY HILLS / HIGHLANDS
 ROAD NETWORK
 MAY, 2018



- Blockchains LLC
- Comstock LLC
- Google
- Switch
- Tesla
- Storey County Limited Liability Company
- Nevada Uplands
- Dolan Ranch
- Sunny Hills
- Daybreak
- Washoe/Storey County Boundary
- Existing Roads
- Future South Meadows
- Existing NV Upland
- Future Access Road Option 1
- Potential Goose Berry Road Options
- Proposed Utility/Road Alignment
- Roads dolan

Note: All future alignments are subject to review and approval of Storey County.

Source: Esri, DigitalGlobe, GeoEye, Earthstar/Geographics, CNES/Airbus DS, USDA, USGS, AeroGRID, IGN, and the GIS User Community

PRELIMINARY

